

Click

SMARTER ENERGY MANAGEMENT SYSTEM

A **LOW COST** BUILDING ENERGY MANAGEMENT SYSTEM (BEMS) FOR SME BUSINESSES.

80% BEMS VALUE FOR 20% OF THE PRICE

SAVE 10-20% OFF UTILITY BILLS
TYPICAL ROI JUST 12-18 MONTHS

AWARD WINNING EMPLOYEE ENERGY ENGAGEMENT AND SUSTAINED BEHAVIOURAL CHANGE



Click1
SMARTER ENERGY SYSTEM
(Insight)



Click2
SMARTER ENERGY SYSTEM
(Insight + Local Control)



**SWIPE AND SAVE
TO KILL POWER ON EXIT**



Click3
SMARTER ENERGY SYSTEM
(Insight + Local Control + Cloud Based Remote Control)



FEATURES AND USE CASES	CLICK 1	CLICK 2	CLICK 3
All NetThings Systems are upgradable, modular and expandable – Future Proof.	✓	✓	✓
All NetThings Systems have WiFi AP built-in, so you don't need your own broadband router or the internet.	✓	✓	✓
Can be used as a simple data logger for Energy Audits or Sub-Metering aM&T. Each NetThings Measurement Unit can monitor up to 6 channels at 2 second intervals. Over 2 years of data is stored on removable microSD cards.	✓	✓	✓
Employee Engagement with award-winning in-premises, wall-mount displays showing true cost of energy in real-time, proven to deliver sustainable behavioural change. Easily explore historical energy use graphs with the 'swipe' function on the touch screen display.	✓	✓	✓
Staff always leaving things on? 'last-worker-out' power switch remotely turns off connected 'smart plugs' for power hungry devices, such as electric heating, coffee machines, water coolers, photocopiers/printers, ovens/hotplates, vending/fruit machines and TVs.	CLICK 2 UPGRADE PACKAGE	✓	✓
Identify energy hungry equipment and ensure it is managed correctly using individual appliance monitoring.		✓	✓
View the energy data on your local smart phones, tablets and computers.		✓	✓
Access building and individual appliance energy data from anywhere in the world for benchmarking and multi-site management. You can also control the 'last man out' switch.			✓
Spot energy performance problems before they escalate by using Intelligent predictive Energy Profiling. NetThings Predicts energy use patterns and contextualises your data based on the Innovate UK SME Energy project.	CLICK 3 UPGRADE PACKAGE	CLICK 3 UPGRADE PACKAGE	✓
Receive text and email alerts on energy profiles being breached, helping you better manage your property portfolio.			✓

Want to Know More? Contact us now

01253 398013 / 07810 733806 | sales@futurefocusenergy.co.uk | Buy Online now at www.futurefocusenergy.co.uk

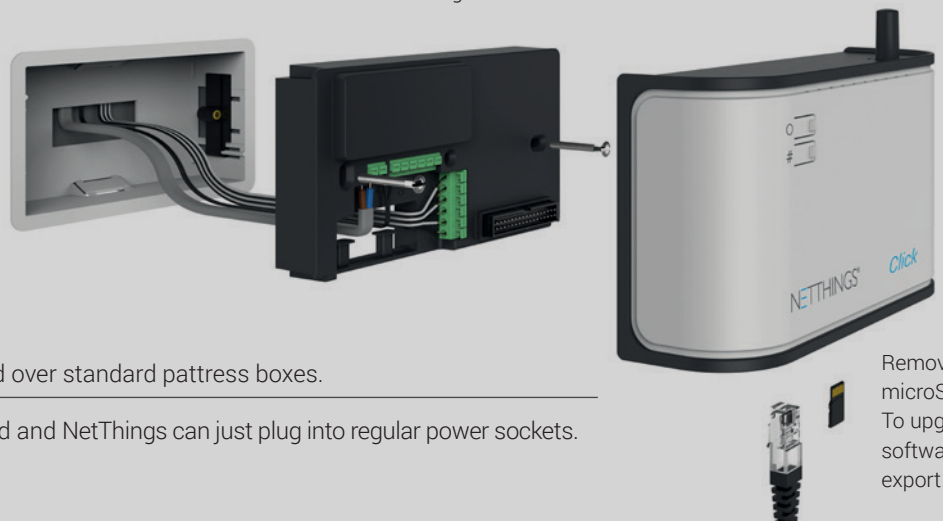
PRODUCT DATA

Name of Manufacturer	NetThings Limited
Unique reference number (model number)	NT02:00:00
Purpose of product (Energy Management)	Building Energy Management
Dimensions	165mm x 95mm x 52mm
Operating temperature range	0°C to 40°C
Enclosure protection	IP 20
Level of protection from electric shock	Double insulation
Case material V0 rating	Rated fire retardant
Supply Voltage	220-240V AC
Max power in watts	7W
Power Supply Frequency Hz	50-60 Hz
WiFi IEE 802.11 Frequency Band	EEE 802.11 BG 2.4 GHz
WiFi Range from Display or Smart Plug to Measurement Unit	Up to 50 Metres - This may be significantly reduced by walls. Standard WiFi Range Extenders and Power Line Communications modems should be used to extend coverage
Maximum number of Connected Smart Energy Sockets	Up to 256 plugs - depending on signal strength and building construction
Type of Memory & Data Storage Capacity	4 Gb Removable micro SD Card. Greater than 2 years
Power supply for display	12W Switching Power Supply: I/P 90-264VAC unterminated wire for spur connection. O/P USB Connection DC 5V. 82.5mm x 40mm x 29mm.
Number of monitored channels	Up to 6: Max of 3 x Electricity via CTs & 3 x any pulse enabled meter
CT Current Transformer related measurements (16mm/24mm)	Voltage, Current, phase angle, phase delay, apparent power, true power and power factor.
Real-time, instantaneous Measurements (2 second measurement intervals)	Energy units consumed £/h (gas, water, electricity, heat, cooling, solar power)
Continued Utility Measurements	Utility bill estimation by day, week, month, quarter and year as well as carbon CO2.
WiFi Security	Wi-Fi Protected Access (WPA) security protocol and certification program

What's in the box?

1 x NT Measurement Unit, 1 x 5" tablet display, 1 x aluminium tamper free wall mount, 1 x display power supply. 1 x CT 16mm Connected Smart Energy Plugs: Smart Plugs are purchased in boxes of 3 as a popular upgrade option

NetThings Measurement Unit



EASY TO INSTALL

Installation is fast and simple

Controllers and smart displays are fitted over standard pattress boxes.

Simple push button connectors are used and NetThings can just plug into regular power sockets.

Removable micro SD card
To upgrade software and export data

DECLARATION OF CONFORMITY This product conforms to: ETSI EN 301 489-1 V1.4.1 (2002-08) IEC 61643, 61326, 61010, 60529. NetThings Limited, 14 New Mart Road, Edinburgh EH14 1RL NetThings policy is one of continuous improvement and development. The right to change specification and appearance without prior notice is reserved. Document Number 200SM047-rev3.

Want to Know More? Contact us now

01253 398013 / 07810 733806 | sales@futurefocusenergy.co.uk | Buy Online now at www.futurefocusenergy.co.uk